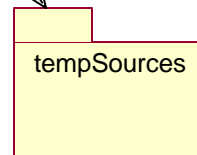
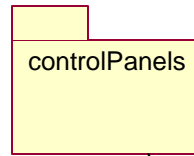
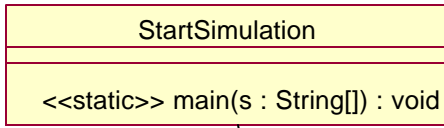


package: default

observer3



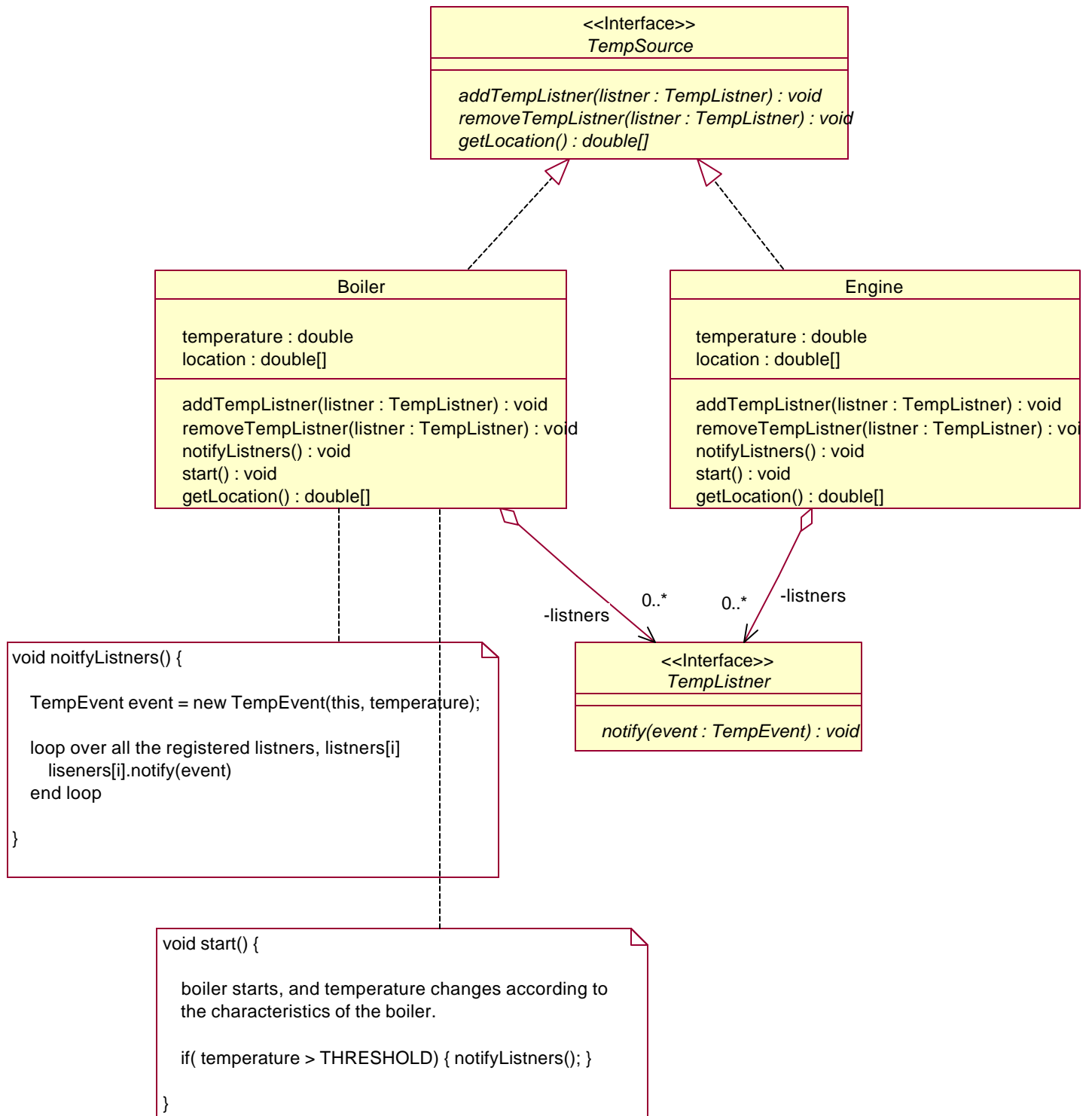
```
public static void main(String[] s) {

    TempSource mainBoiler = new Boiler();
    TempSource engineOne = new Engine();

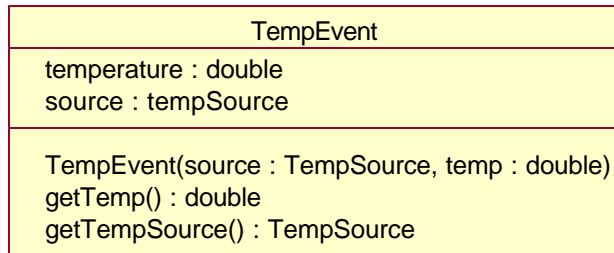
    MasterPanel panel1 = new MasterPanel(mainBoiler);
    MasterPanel panel2 = new MasterPanel(engineOne);
    MasterPanel panel3 = new MasterPanel(engineOne);

    mainBoiler.start();
    engineOne.start();

}
```



package: tempSources



```
// constructor  
  
public TempEvent( TempSource source, double temp) {  
  
    temperature = temp;  
    tempSource = (TempSource)source.clone();  
  
}
```

package: controlPanels

